



Top Notch Volunteering

Rail Partnership volunteers' work at Greenbank is commended

HN

GREENBANK has, for a long time, been something of a "Cinderella" station. Although it is just outside the Parish boundary, it is the station from which Hartfordians can catch trains to Chester, Stockport and Manchester. Now,

however, a group of volunteers, working with the Mid Cheshire Community Rail Partnership and linked to Hartford's Men In Sheds, has taken on the mantle of the Friends of Greenbank Station. The group's efforts have already been recognised at the Cheshire Best Kept Stations awards ceremony, held at the Grange School in February, as Greenbank was

"highly commended" in the category for Best Kept Gardens.

The group meets every Monday. Members collect litter (from platforms, embankments and footpaths - sadly, they cannot work on the trackbed) and paint fences and other woodwork. Their current project is a mural commemorating the Fallen of World War I, to be found on the Manchester (to page 2)



(Main picture, left to right) Volunteer Mark Goulborn, Cheshire Best Kept Stations President John Hulme BEM, volunteer Nigel Nutt and support worker Graham Hallett, alongside the World War I display at Greenbank station, which has been taking shape since October. John was dropping

in to congratulate the volunteer group on its recent commendation. (Inset) Mayor of Northwich Alison Gerrard, with a very special birthday cake at Men In Sheds. The pioneering project reached its tenth birthday on 30 January. Read more about Men (and Women) In Sheds on page 2.





Cheshire is the only county in England to have a Best Kept Station competition. President of Cheshire Best Kept Stations, John Hulme BEM, tells us:

"I grew up on Castle and spent many an hour at Greenbank station, during the 1960s (when it was still known as Hartford And Greenbank), spotting trains. In those days it was staffed, and I would help the porter



Friends of Greenbank Station receive the "highly commended" certificate at February's ceremony

and sit in his mess room, keeping warm by a roaring coal fire.

"Those days are long gone, of course, but it is great to see new faces looking after the station. I am passionate about community involvement on Cheshire's railway stations, and the work that the Friends of Greenbank Station are doing really is top-notch volunteering.

"The commendation that was given to the group at this year's Cheshire Best Kept Stations was richly deserved. The range of activities being undertaken represents, in every sense of the word, a creative partnership between the local community and the rail industry, and I am full of admiration for the efforts being made to improve the station."

(from page 1) platform. They also, on occasions, catch a train to Lostock Gralam to do similar work there.

Later this year they hope to start work, again in partnership with Men In Sheds, on the garden next to the Chester platform. Well done, and thank you, to all involved in looking after one of our local stations!

MEN IN SHEDS, meanwhile, has reached its tenth birthday, and held a special afternoon tea on 13 February (complete with a shed-themed cake!) to celebrate. Alison Gerrard, Mayor of Northwich, welcomed visitors, including past and present members of the shed, to look

through old photographs and reminisce about the sheds, and different projects, undertaken over the years.

Hartford's Men In Sheds is run by Age UK Cheshire, and was the first such project in the country. There are now 470 sheds across the United Kingdom, aimed at men over the age of fifty. Hartford's Women In Sheds was launched in 2017, and continues to meet every Friday. Both projects offer their members an informal environment in which to make new friends, and learn and share skills in a well equipped workshop.

☎ 01606 301897

✉ gus.glynn@ageukcheshire.org.uk

🌐 ageukcheshire.org.uk



Celebrating ten years of Men In Sheds. Gus Glynn, the Hartford co-ordinator, is at the far right of the picture.

Past Times in Hartford

HN

NOT FOR THE FIRST TIME, HN has been accosted in the street by a lady! In this case, it was to be told that the 1926 photograph, printed in February's *Hartford News*, of the Hartford School Football Team, featured her father. It was, apparently, the first photograph of any description that the lady in question had seen of her father with hair.

In fact, a number of you have been in touch following the publication of this item. Nick Moore (who now lives in Moulton), for example, writes:

"I've just seen the photo of a group of young lads in the 1926-27 football team, and was surprised to see my late father holding the football.

"Mr Geoff Moore would have been roughly 13 years old I think. He was born in the cottages on School Lane, served during World War II and was a major. After that he became a journalist, serving in the Middle East.

"He returned to his beloved Hartford and lived in Stones Manor Lane, until his death at the age of 74.

"He was editor of the Northwich Chronicle for 43 years, until his retirement, and was also a member of the Parish Council.

"I even remember, when I was about seven years of age, him driving around Northwich, looking for the members of a pop band that had been mobbed, following their appearance at the Memorial Hall. He was, I assumed, to take them to the station to get them home. The year was 1963, and the band was the Beatles!"

The most unexpected contact came from a contemporary of the children in the photograph. Following its publication, HN was privileged to meet a gentleman who was six years of age at the time it was taken (so you do the maths!). He has generously made available a further selection of images (including one taken at Hartford School), some of which we will publish in the April edition of *Hartford News*.

For this month, however, we feature another picture taken at Hartford School. This one is dated 1923 and



Hartford School, around 1923



Top row: Harry Baily, Harold Rogerson, Norman Pearson, Syd Goulding
 Second row: Mr Newman (Head), Annie Lamb, Edith Burgess, Ruth Norbury, Dorothy Vernon, Symonds, Miss Burton (Teacher)
 Third row: Edith Bonnel, E Platt, Alice Pierce, L Madely, B Stanway, Lettie Moore, Edith Cooper, Lily Goulding, Olive Moore, Edith Shuttleworth
 Fourth row: Kathleen Knight, Lucy Houghton, L Garner, Mary Knight, Dot Moore, Nora Betteridge, Lily Rance, Effie Cookson, Edith Cross
 Bottom row: Jack Stockton, Bill Evans, Charlie Stanway, Jim Sayle, Arthur Stanway

depicts, we assume, a complete year group, together with two members of staff. To judge by the variety of expressions on their faces, the children weren't given particularly clear guidance about how they should respond to the photographer's use of the word "cheese"!

As we did previously, we have reproduced the children's names exactly as they were recorded on the reverse of the print, complete with apparent mistakes. As we suspected, there were several inaccuracies in the list published last month that have since come to light. In this month's list, one or two names appear to be incomplete, and we cannot be sure that all are spelt correctly.

We would, of course, be delighted to hear from anybody related to the people in the photograph. If you have a story to tell, do get in touch!

news@hartfordparishcouncil.org.uk

Since last month, HN has been experimenting with Photoshop (other image editing software is available, folks!) and spruced up the footballers seen in the February edition of *Hartford News*.

This month's offering has already been subject to a facelift, most notably the removal of some crude

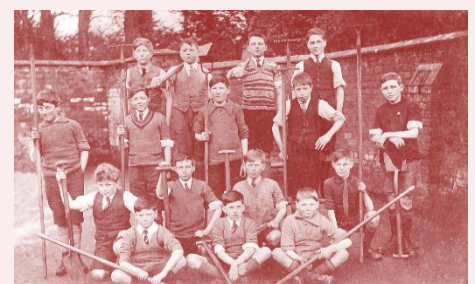


handwriting from the original print. You can see the step by step fettling process on our Facebook page.

Also to be found there are the tidied-up versions of last month's

picture, and a 1926 photograph of the school's gardening class (many of whom were evidently also members of the football squad).

facebook.com/hartfordnews





Hartford Parish Council

Points of interest from Parish Council meetings

The Parish Council aims to improve the quality of life for the residents of Hartford by ensuring that it is a desirable, thriving and sustainable place in which to live.

Hartford Parish Council meets on the second Monday of each month (except August), at the Village Hall. Members of the public may raise matters with the Council during the Public Open Forum. These can be discussed, but the Council cannot legally make decisions on non-agenda items, so any decisions on these must be deferred to the next meeting. Following the Open Forum, members of the press and public may attend the meeting, but are not permitted to speak or take part.

Minutes of meetings of Hartford Parish Council, following their formal approval (normally at its next meeting) are published on the Council's website, or are available, on request, from the Parish Clerk.

Hazel Catt, Parish Clerk
Extra-ordinary meeting held on Monday 30 January
Ordinary meeting held on Monday 11 February

Campus development proposal

CWaC councillors will be calling in the planning application to demolish Mid Cheshire College and erect 108 dwellings on the site. A special meeting of the Parish Council's Planning Group will be called to consider this application further.

Precept

The Parish Council precept is the only element of the Council Tax, paid by householders in Hartford, guaranteed to be spent within the village. The precept for 2019-2020 has been set

Speedwatch

Councillor Phil Herbert

Hartford Community Speedwatch has extended its activity, in cooperation with Michelle Gillett, our new PCSO. Independent operations will still take place that will result in warning letters being sent to drivers exceeding the speed limit. However, when operating with the PCSO, evidential radar



Four looking fab in hi-viz! Councillor Martin Loftus, PCSO Michelle Gillett, volunteer Ron Etheridge and Councillor Phil Herbert

equipment will be used, and offenders processed by the police in the usual manner. During a recent speedwatch, in the space of an hour, we only 'caught' four offenders. If our activities have the effect of slowing drivers down, then it can be considered a success. Our objective is to encourage drivers to observe the speed limit, not catch them out.

at £132 605, meaning there will be no increase in the amount paid for it by Council Tax payers.

Films In Hartford

A total of £1500 was raised by the the 2017-2018 season of films shown at the Grange Theatre. In addition to the £300 already given to the Grange School's charities, it was agreed that charitable grants would be awarded to the following organisations:

- Brain Tumour Society £200
- Cheshire Penguins £200
- Hartford Stroke Club £100
- Hartford Young NSPCC £200
- Local Samaritans £100
- Neuro Muscular Society £200
- St Luke's Hospice £200

2019 Council Election

HN

Do you think you could make a positive difference in Hartford? Why not consider becoming a councillor? Elections for positions on Hartford Parish Council are due to be held on Thursday 2 May, and formal notices of poll will be published on Friday 15 March, and in next month's edition of *Hartford News*. As a councillor you can be directly involved with your community. You are able to have your say on the local issues people care about, influence local service delivery and help to decide how local money is spent to improve your community.



New benches have been installed by the Parish Council, including this distinctive remembrance themed one on School Lane. Another is in memory of Geoff Sayle, about whom you may recall reading in our October 2018 edition.



College co-operation

Councillor Steve Farrell

As part of Hartford Parish Council's community engagement, councillors have been working with Petty Pool Vocational College in a number of community tasks around our village.

Students have worked on the allotments, giving much welcomed assistance to a number of plotters, as well as creating a new wildlife area. They have also built winter habitats for hedgehogs and are looking to build a bug hotel to encourage pollinators into our allotments. Other tasks around the village are planned.

The college has a range of vocational courses, including Animal Care, Horticulture and Conservation, and Preparation for Independence and Work. In working with the college, Hartford Parish Council is seeking to help students with the transition from



Councillor Steve Farrell, with students from Petty Pool College

classroom learning to the outside world of work and independent living.

Petty Pool Vocational College is an education provider for young adults with learning difficulties, supporting up to one hundred full-time students, from across Cheshire and the north west. It aims to provide every learner with an effective and enjoyable educational experience that empowers them to reach their full potential.

Any business, large or small, based in the village, which may be in a position to offer supported internships or positions, in hospitality, catering, retail, information technology or office work, is encouraged to visit the college's website.

pettypool.org.uk

Eira Pauline Bowden 1947 - 2019

Hartford Parish Council

Hartford Parish Council was particularly saddened to hear of the death, on 4 February, of one of its former stalwarts, Eira Bowden.

Eira was born in Pontygwaith, in the Rhondda Valley, and remained fiercely proud of her Welsh heritage throughout her life. It was while she was living in Bristol that she met her husband, Derek, with whom she moved to Hartford in 1976. Here they raised three children and enjoyed a number of grandchildren. Eira worked for twenty years at Rudheath High School and, after her retirement, became a volunteer teaching assistant at Forest School, Weaverham. She loved to be outdoors; Derek says that they had walked or cycled together along every trail in Mid Cheshire!

Eira became a member of Hartford Parish Council in 2009, motivated by her keen interest in the environment and wellbeing of our village. Until ill health forced her to stand down from the Council in 2017, she gave freely of her time, insight and expertise. She listened to and represented the views of residents on numerous issues, ultimately making a positive difference to our village. If you take your children to the play area at Grange Park, for example, remember that it was Eira who pushed for - and turned into reality - a dog free area in the children's playground. She was interested, too, in the activities of our PCSO. It typified her wholehearted approach that she gave up her time to accompany him on his rounds of the village, for the

duration of one of his night time shifts, in order to gain a better understanding of his role.

She also participated in the production and distribution of *Hartford News*. A retired teacher of languages, skilled in the correct use of grammar, punctuation and spelling, she was, for several years, its proof-reader in chief, as well as co-ordinating the team of volunteer distributors. Its editor always looked forward, each month, to working with Eira to pull apart and correct the copy before it was sent to the printers.

During her eight-year membership of the Council, Eira tirelessly inspired,



Eira, on a charity walk up Snowdon, in May 2007.

led and encouraged her Council colleagues, doing so with great warmth and genuine friendship. In short, the contribution that Eira made to the Council and our village cannot be overstated.

Donations in memory of Eira, for The Christie and St Luke's (Cheshire) Hospice, can be made via George Bell Funeral Service, Northwich.

Hartford News has a new email address

news@hartfordparishcouncil.org.uk

Contributors are asked to note our new email address, and update contacts lists. *Hartford News* is the official newsletter of Hartford Parish Council, and the new address has been chosen to reflect

this, and be consistent with the URL of the Council's website. The existing Hotmail address will be checked until 15 June (deadline for our Summer edition), after which it will be deleted from the devices on which it is currently monitored and messages to it will not be read.



Agenda

Volume 46, number 5: March 2019

Monday 4 March

Cheshire Herb Society

Hartford Village Hall
6:00 pm to 8:00 pm

Welcome to the Society

Sample herbal teas, and learn about their properties and uses, with medical herbalist, and trustee of the society, Barbara Wilkinson.

Entrance: £4.00 (society members: £3.00)
✉ barbara_wilkinson101@hotmail.com

Wednesday 6 March

Hartford Women's Institute

Hartford Methodist Church Hall
7:30 pm

Hairdressing Through The Ages

Ian Black
☎ Sybil, 01606 871446
🌐 cheshirewi.org.uk
🌐 nafascheshire.org.uk/clubs

Sunday 10 March

Hartford Civic Society

Meet at bus stop at the end of Walnut Lane
10:00 am (for around 90 minutes)

Litter Pick

Our intrepid litter pickers continue their efforts to keep our village tidy. Any new volunteers are very welcome. All equipment provided.

Our next coach trip will be to Chatsworth House on Wednesday 15 May. The charge, for this very special visit, is £31.00, which covers coach travel, and entrance to the house and gardens.

Information, bookings: ☎ 01606 882197
🌐 hartfordcivicsociety.org.uk

Monday 11 March

Hartford Parish Council

Hartford Village Hall
7:15 pm Public Open Forum
7:30 pm Main Meeting

Ordinary Meeting

Raise issues during the Public Open Forum.
☎ 01606 784401
✉ clerk@hartfordparishcouncil.org.uk
🌐 hartfordparishcouncil.org.uk

Northwich Family History Society

Hartford Methodist Church Hall
7:30 pm

Quarter Sessions Records

Claire Moores
☎ Dave Thomas, 07807 946830

Tuesday 12 March

English Speaking Union (Mid Cheshire Branch)

Portal Premier Golf Club, Tarporley
11:45 am (luncheon served from 1:15 pm)

John Dalton

Diana Leitch on John Dalton, the chemist, meteorologist, founder of atomic theory and colour-blind man of Cumbria.

Booking essential
☎ Valerie Mais, 01606 76534

Eddisbury Flower Club

Sandiway Church Hall
2:00 pm

Throw Now't Out

Arthur McDonald (Demonstrator, Edenfield)
☎ Jackie Pemberton, 01606 883473
🌐 nafascheshire.org.uk/clubs

The editor and the Parish Clerk jointly determine which items are to be included in *Hartford News*; their decisions are final. Any items submitted may be edited prior to publication.

Views and opinions expressed in *Hartford News* may not always reflect those of individual members of Hartford Parish Council.

All 507 previous editions of *Hartford News* are available in electronic form on request or can be downloaded from the Parish Council's website.

Items for inclusion in the April edition (to be published on 1 April) should be sent, preferably by email, to reach us on or before 15 March.

We would appreciate the submission of longer articles at the earliest possible opportunity.



Tuesday 12 March continued

Weaverham History Society

Weaverham Primary Academy
7:30 pm

Building Paddy's Wigwam

Philip Harrison, resident site architect during the building of the Metropolitan Cathedral in Liverpool from 1964 to 1968, will recount events during the cathedral's design and construction.

📞 Peter Clarke, 01606 301258
🌐 history.weaverham.org.uk

Thursday 14 March

Knots & Needles

Hartford Village Hall
7:30 pm to 9:30 pm

Stitch and Chat

📞 Jean McBride, 01606 889871

Saturday 16 March

Rivendell Singers

St Wilfrid's Church, Davenham
7:30 pm

Annual Spring Concert

🌐 rivendellsingers.org.uk

Church Services

St John's Parish Church

Sunday services

8:00 am
Holy Communion
10:00 am
Morning Service
6:30 pm
Evening Service

🌐 stjohnshartford.org

Hartford Methodist Church

Sunday services

10:30 am
Morning Worship
All are welcome to join us for worship.

🌐 hartfordmethodist.wordpress.com

From our archives
40 years ago: Keep it dark



It was business as usual at the Parish Council meeting, as reported in the March 1979 edition of *Hartford News*.

A resident of Walnut Lane attended the Parish Council meeting to complain about the placing of a new lamp standard outside his house. The Clerk explained that the original eight lamp-posts in the road had just been replaced by twelve new ones, with different spacing between them. The resident said that before the light was installed, he had complained to the Vale Royal chief technical officer who, after discussing the matter with him, had declined to change the

site of the lamp-post. The resident cited British Standard S489, the code of practice for installing lighting in residential areas, in support of his case. Later in the meeting the council considered the matter and decided not to support the complaint.

Vale Royal District Council notified the Parish Council that the following names had been suggested for streets off Landswood Park in the latest phase of the development: Cloughwood, Danesway, and The Lawns. The Council decided that the first two names were inappropriate and geographically inaccurate and that the third name could be improved upon.

Hartford Primary School
Cheshire FA Mini Soccer Final success

Tom Cairns (PE Lead)

In February, our year 5/6 (under 11) football teams went to Crewe Alexandra Soccer Centre for the Cheshire Schools FA Mini Soccer Finals. The boys negotiated three tough group games, quarter and semi-finals, and took the lead in the final only to lose 2-1 to Barrow Hall.

The girls went one better. After dominating the group stage, winning 3-0, 4-0 and 4-1, they

found themselves in a quarter final against Lache. The match went to penalties, which Hartford won 6-5. The girls eased through the semi-final with a 3-1 win, putting them into the final against favourites (and trophy holders) Our Lady of Perpetual Succour. It took extra time, but Nyah's brilliant goal from the half way line, and a second from Sophie, sealed a 2-0 win. They now go to Harrogate, for the North of England Schools FA Finals, in April. Good luck, girls!



Ellie, Grace, Lauren, Zara, Jess, Nyah, Sophie and Freya, Hartford Primary School's victorious girls' team, pictured with the trophy.



Visit the Parish Council website:



Follow Hartford News on Twitter:



Hartford News on Facebook:



Saturday 23 March

Marshall's Arm Local Nature Reserve

Meet at Stones Manor Lane entrance
10:00 am to 12:00 noon

Pignuts, Paddling and Pipistrelles

Join us on our heritage trail to discover how the local salt industry gave rise to Cheshire's first nature reserve.

☎ Virginia Hunt, 01606 42667
🌐 marshallsarm.org

Saturday 23 to Saturday 30 March

Weaver Vale Art Society

Wyevale Garden Centre
10:00 am to 5:00 pm

Spring Art Exhibition

Work by local artists.

🌐 facebook.com/Weaver-Vale-Art-Society



Winner of the People's Choice competition at the Society's last exhibition was *Street Theatre*, by Hartford artist Carol Dooley.

Tuesday 26 March

Films In Hartford

The Grange Theatre

Doors 7:15 pm; film starts at 7:30 pm promptly

Mary Queen Of Scots

Saoirse Ronan, Margot Robbie

Mary and Queen Elizabeth I of England were cousins. This historical drama chronicles the 1569 conflict between their two countries.

Tickets £5.00 each, available from Hartford Dry Cleaners

☎ Trish Parker, 01606 74024

Weaverham & District Gardeners' Group

Weaverham Primary Academy
7:30 pm

Spring into Action

Jacqueline Iddon of the Hardy Plant Society

🌐 weaverhamgardeners.btck.co.uk

Wednesday 27 March

Mid Cheshire Flower Club

Hartford Methodist Church Hall
7:15 pm

A river runs through it

Jacqui Owen (Demonstrator, Nantwich)

Entrance: £5.00; visitors welcome.

☎ Lorraine Fitches, 07836 785780

Friday 29 March

Northwich & District Heritage Society

The Grange Theatre
8:00 pm

Cheshire Landscapes

Claire Moores will look at our landscape and mankind's imprint upon it.

Note: this is a change to our original programme

🌐 northwich-heritage.org.uk

Contact the Parish Council via the Parish Clerk

☎ Hazel Catt, 01606 784401

✉ clerk@hartfordparishcouncil.org.uk

📍 Hartford Village Hall, 244 Chester Road, CW8 1LW

🌐 hartfordparishcouncil.org.uk

Village Hall bookings and enquiries

☎ Vikki Herbert, 07714 908571

🌐 hartfordvillagehall.org.uk

Hartford News is produced ten times each year (there is no edition in January or August), being published in print and online on the first day of the month.

✉ news@hartfordparishcouncil.org.uk

Hartford News March 2019

Volume 46, number 5 (issue number 508)

© Hartford Parish Council 2019