

Friends of Romiley Station



## NEWSLETTER

### SEPTEMBER 2021

It's almost the end of summer and as the nights draw in we have now undertaken our final Tuesday evening Task Session for this year. So as the days shorten and the nights lengthen here is our latest newsletter to hopefully keep you entertained.

#### TASK SESSIONS



A great deal of general tidying up took place during August as well as a lot of weeding.

It was a bit like painting the Forth Bridge (see below for a bit about the actual Forth Bridge) for as soon as we reached one end of the station it was time to start again at the beginning.

Unfortunately, that included litter picking with so much rubbish being thrown around the station

by people who simply can't be bothered to use one of the numerous litter bins at the station and in the area. In fact this past month Stockport Council have done a great job replacing many of the life expired bins with brand new ones.

It was lovely to see that the sunflowers planted by the pupils from Bredbury Green Primary School in June had flourished and have been putting on a great display.





A few canes have been needed to support the sunflowers but other than that all has gone extremely well with the newly created area behind Platform 2.

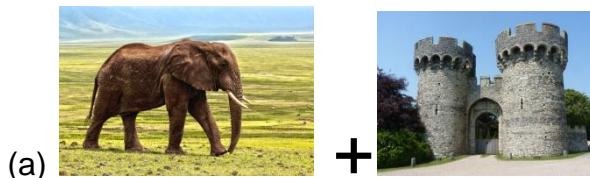
The next Task Session is during the afternoon of Saturday 11th September (meet from 2pm).

The session after that takes place on Saturday 9th October (also from 2pm)

## STATIONS ANSWER SMASH

This month we have a quiz with a bit of a difference. For each set of clues you have to find two stations on the National Rail Network. The difference is that you have to smash the two stations together as the end of the first station forms the start of the second station. It's as simple (or as hard) as that.

For Example



(b) Home to the Tigers Rugby League Team

21 Letters (17 and 10)

The answer is Elephantandcastleford (21) (Elephant and Castle / Castleford) (17 and 10)

1. (a) Wiltshire town that is home to the magic roundabout (b) The St Leger is run here

13 Letters (7 and 9)

2. (a)



Opposite of West (b) Also a tram terminus near Parrswood

18 Letters (6, 4 and 4, 8)

3. (a) Home to our Friends Group (b) Pacers were based on designs by this bus company based in Lancashire (also a brand of paint)

11 Letters (7 and 7)

4. (a) Kent town famous for brickmaking, situated on Watling Street and twinned with Ypres. (b) South Dorset coast town whose football club were relegated from the Premiership in 2020

18 Letters (13 and 11)

5. (a) Former Royal Burgh in Scotland and the birthplace of John Muir



(b)

11 Letters (6 and 8)

6. (a) Station near High Lane, Stockport that has no vehicular access (b) Another Stockport station, whose name means "a clearing in the wood". The Peak Forest Canal passes nearby (through a 176 yard long tunnel)

13 Letters (10 and 7)

7. (a) Home to Staircase House, some Air Raid Shelters and what used to be the largest brick built viaduct in Europe



(b)

17 Letters (9 and 4, 8)

8. (a) Town with a famous pier on the Leeds Liverpool Canal

+



(b) Location of the Angel of the North

18 Letters (5 ,8 and 9)



9. (a) Scottish village famous for weddings (b) Lies between blue and yellow on the

visible spectrum +



(They have all been closed in Romiley)

15 Letters (6, 5 and 9)

10. (a) The largest town in Hampshire (b) A city of 5 towns famous for its pottery

18 Letters (11 and 5, 2, 5)

11. (a) "Little St Marys Parish" in Welsh which has a giant granite quarry (b) Cheshire village whose Parish Council found fame for its antics at zoom meetings during lockdown

20 Letters (14 and 9)

12. (a) The Roman town of Camulodunum in Essex (b) Headquarters of Durham County Cricket Club

18 Letters (10 and 7, 2, 6)



13. (a)



(b)

16 Letters (10 and 10)

14. (a) Lies at the head of Loch Shiel and made famous by the Harry Potter Express  
(b) Medieval town on the River Weaver that hosts an international cheese festival

15 Letters (10 and 8)

14. (a) The sheriff from here searched high and low for Robin Hood  
(b) The British Formula 1 driver who won 2020 world title teams up with a geometrical shape with 4 equal sides and 4 internal angles of 90 degrees each

21 Letters (10 and 8, 6)

## FRIENDS OF CHADKIRK - WELL DRESSING - 31ST JULY 2021

We mentioned last month that this year the Friends of Chadkirk were once again able to carry out their traditional Well Dressing following last year's enforced absence.

The theme was "Strength and Resilience", and the turn out for the dedication and blessing was excellent, as indeed was the support throughout the afternoon at the Chapel and at the stalls in and around the gardens

The Reverend Rod Hill carried out the blessing before the Mayor of Stockport, Cllr Adrian Nottingham, formally declared the Well Dressing open after a very appropriate speech thanking all those involved.



## EDUCATIONAL SEASON TICKETS (MARPLE HALL SCHOOL)

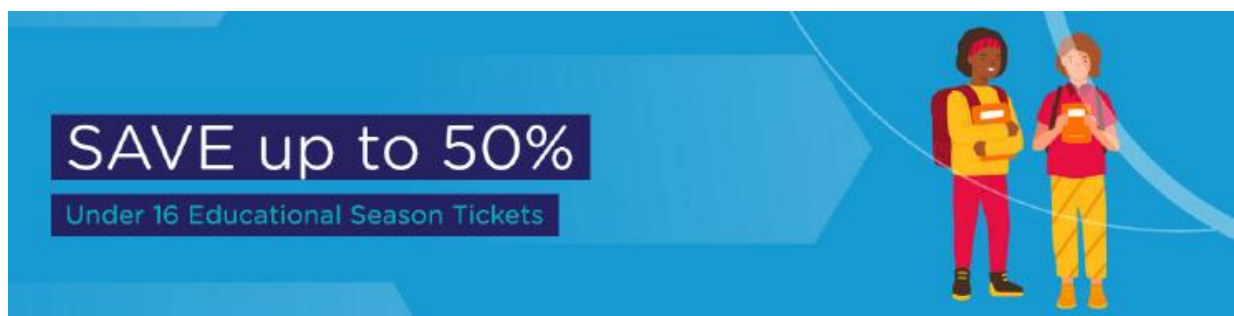
We have been advised by John Kenny (Senior Transportation Officer - Community Rail based in Stockport) that Northern operate an 11-16 Educational Season Ticket which gives up to 50% discount on a child season ticket.

From Romiley (and other stations in our area) they are available for travel to Rose Hill Marple for pupils who attend Marple Hall School.

The tickets can be bought online (use <https://www.northernrailway.co.uk/educational-season>) and are available to purchase up until the end of September.

The 50% discount applies to annual ticket when bought online. There is also a 40% discount on a termly ticket for Autumn, Spring and Summer.

The season ticket offers no restrictions, which means students can use the ticket at evenings and weekends between their two chosen stations.



## VANDALISM

It is very disturbing to have to report that there has been a great deal of vandalism at the station of late.

We had our book swap in the Platform 2 Waiting Room trashed with storage boxes smashed. All this followed on from last month when some rather sticky drink had been thrown onto the walls behind the books as well as over the books themselves.

In addition we have had to remove one of the Eamonn Murphy pictures from the fence at the back of Platform 2. The picture, of Chadkirk Chapel, had been extensively scratched by some sharp instruments. We will now contact our printers and have it replaced as soon as possible.



Finally, we have started to replace the perspex that covers our community notice boards as these have been damaged by mindless individuals melting parts of them with what would appear to have been lit cigarettes.

We know that the CCTV at the station did pick up some of the individuals who caused the damage and their description was very kindly passed on to the BT Police by the station staff.

A suitable notice has also been placed in the waiting room asking people to respect the station and everything there.

## MANCHESTER AND BIRMINGHAM RAILWAY - 180TH ANNIVERSARY

Tuesday 10th May 2022 is the 180th anniversary of the opening of the Manchester and Birmingham Railway between Stockport and Sandbach.

On that day a special event will take place at Wilmslow station which will include the unveiling of a replica plaque identical to that put in place in Manchester in 1839.

Full details will follow in due course but you may want to make a note of the date in your diary should the event be of interest to you.

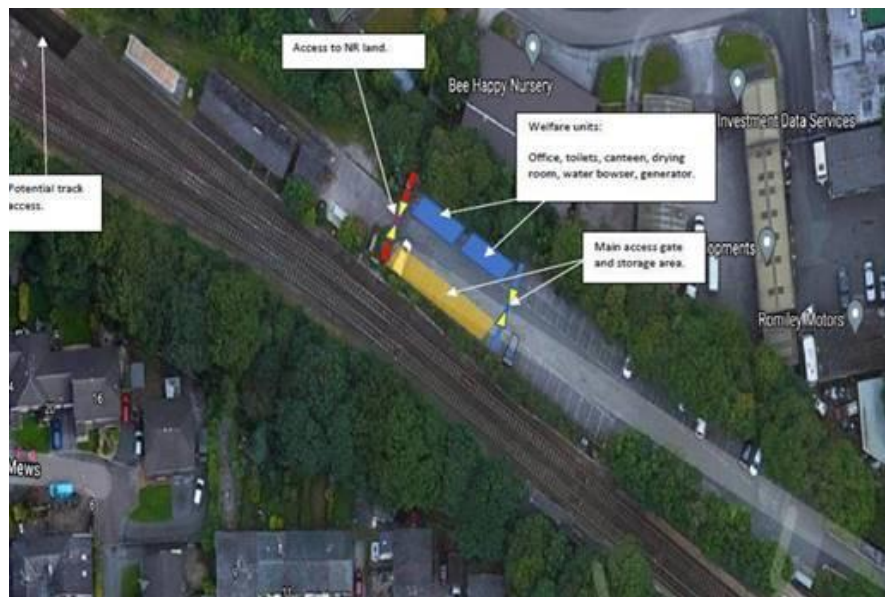


## STATION CAR PARK - PLATFORM EXTENSIONS

We have been advised that Network Rail are to commence work on 25th September so as to extend the length of the platforms at the station. The work will continue right up until a week or so before Christmas.

So as to gain suitable trackside access as well as provide compound facilities they have approached Stockport Council with a view to them renting an area of the station car park.

This will result in the loss of some 25 car parking spaces during the work right at the far end of the car park near to the steps that lead down to Romiley Health Centre, as shown on the image above.



## NORTH QUEENSFERRY STATION AND THE FORTH BRIDGE



Its always been really good to visit other stations in Northern's area of operation not only to see how well some Friends Groups have cared for and improved their local station and to get ideas for what can be done at Romiley.

Before the pandemic we would often feature the work or these other Groups in our newsletters so that our readers could share in those visits.

Occasionally though it was lovely to go a bit further afield and see what was taking place elsewhere.

So it was very nice in the middle of August when two of our members were able to take a trip into Scotland which featured not only good weather but trips under and over the Forth Railway Bridge and a visit to North Queensferry station which lies just a few hundred yards north of what is probably the most famous railway bridge in the world.





Certainly, it is probably one of the most photographed.



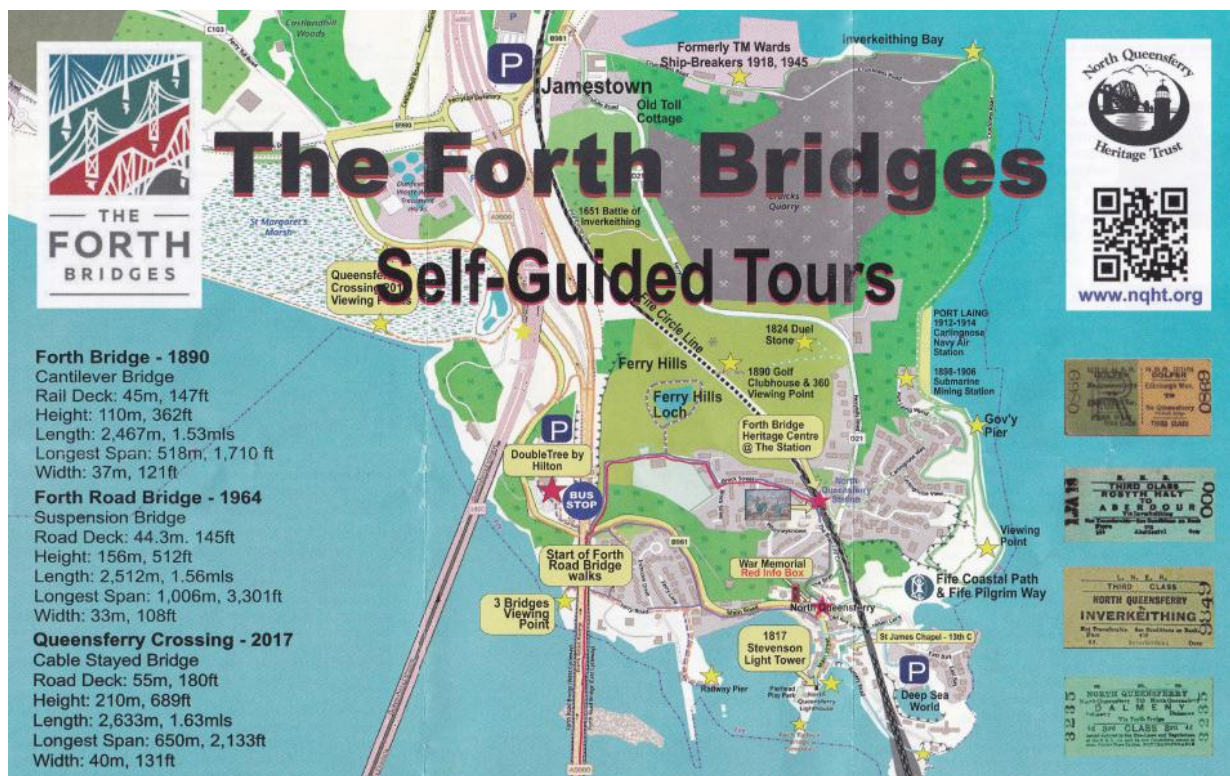
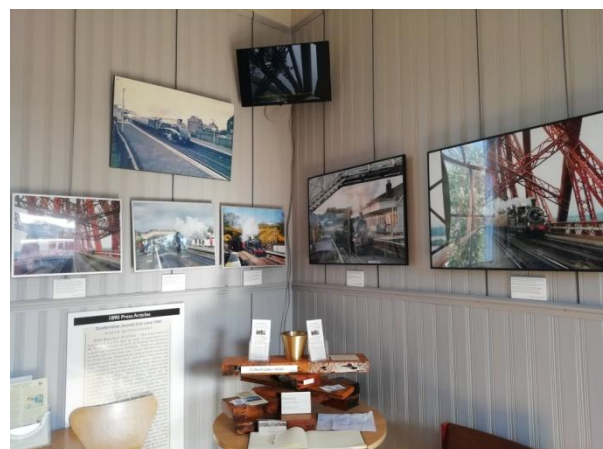
North Queensferry station was an absolute delight and is very much a credit to ScotRail and those members of the local community who care for it.

Not only was it in excellent condition but the buildings on the south bound platform had been transformed into a heritage centre which told the story of the area in general and the Forth Bridge in particular.

One of the rooms was effectively a living museum with hands on stuff for visitors of all ages. It also included a continuously running video show featuring the bridge through the years since it's opening in 1890.

There were also some excellent leaflets giving details of walks in the area including one over the Firth of Forth using the 1964 Forth Road Bridge and then returning by rail from Dalmeny station.

If you are interested in learning more about the station and the Forth Bridges visit the North Queensferry Heritage Trust's website at [www.nqht.org](http://www.nqht.org).





## STATIONS ANSWER SMASH - THE ANSWERS

1. Swindoncaster (Swindon Doncaster)
2. Redcareastdidsbury (Redcar East East Didsbury)
3. Romileyland (Romiley Leyland)
4. Sittingbournemouth (Sittingbourne Bournemouth)
5. Dunbarmouth (Dunbar Barmouth)
6. Middlewoodley (Middlewood Woodley)
7. Stockportsunlight (Stockport Port Sunlight)
8. Wiganwallgateshead (Wigan Wallgate Gateshead)
9. Gretnagreenbank (Gretna Green Greenbank)
10. Basingstokeontrent (Basingstoke Stoke on Trent)
11. Llanfairfechandorth (Llanfairfechan Handforth)
12. Colchesterlestreet (Colchester Chester Le Street)
13. Ribbleheadingley (Ribblehead Headingley)
14. Glenfinnantwich (Glenfinnan Nantwich)
15. Nottinghamiltonsquare (Nottingham Hamilton Square)