



NEWSLETTER

MARCH 2024

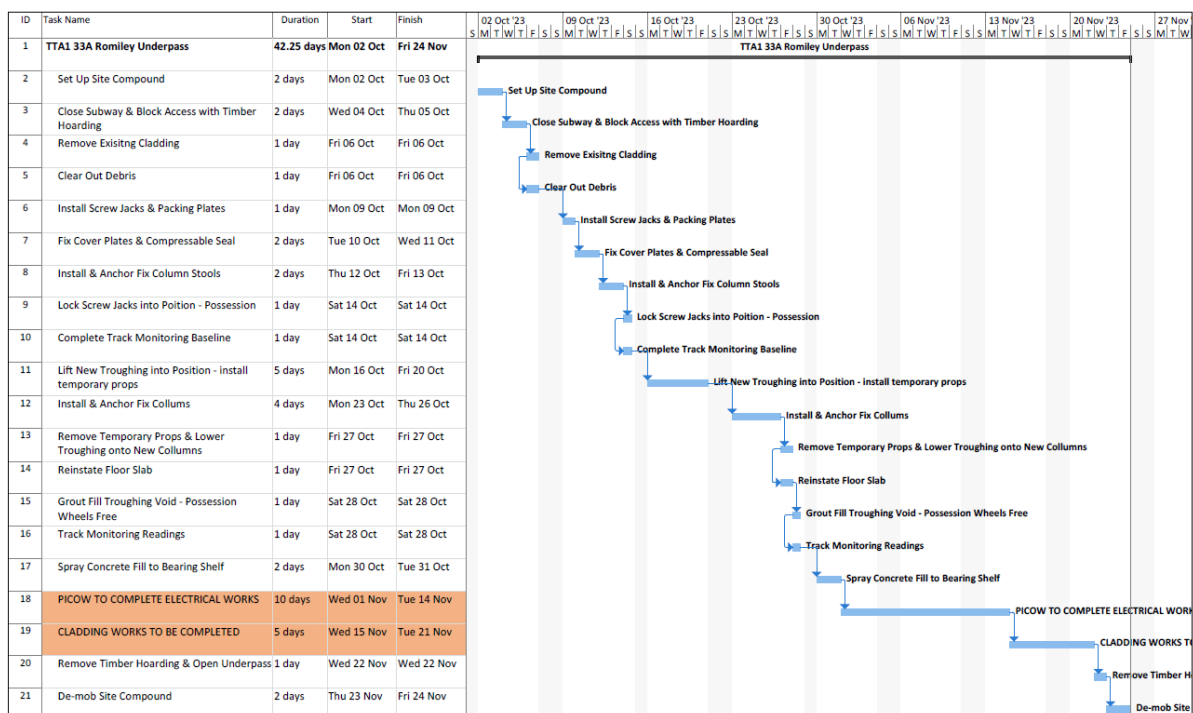
Welcome to our March newsletter. It has been a very busy February, as you will read below, and we very much look forward to March. Firstly, we have our Annual General Meeting on the 6th, then on the 12th it's the Cheshire Best Kept Stations 21st Anniversary Awards Evening before the Community Rail Network Awards in Swansea on the 18th. As you will have read in our special December Newsletter we have been shortlisted for an award, as indeed have a number of other stations in our area. We wish everyone success and an enjoyable trip to South Wales.

Also in March many plants and flowers will welcome the longer days and hopefully warmer and somewhat dryer weather.

ROMILEY STATION – IMPROVEMENT WORKS

As we mentioned in last month's newsletter the work to the underpass had still not been completed. Indeed nothing had taken place for a while.

Sadly that is still the position, even though it is now almost 5 months since the underpass was closed for work that was scheduled to take less than two months, as set out in the programme of works provided to us at the time and set out below.



On 14th February 2024 workmen did visit the station and fully opened the temporary gates that had been installed at the booking office end of the underpass. They were there to carry out some jet washing and we were able to take a photograph, set out below, which shows that there is little chance of the underpass reopening any time soon given its current condition.



Our members and the public keep asking us for updates so we will do our best to keep providing them.

TASK SESSIONS

We held an extremely well attended Task Session on 10th February 2024 and a couple of days later collected our 1,000 litre water container from a recycling company in Stalybridge.

This is now in place on the concrete plinth originally used to hold the large fuel tanks that used to be on site when what is now the Council car park was a goods and coal yard.



We are extremely grateful to the Romiley Life Centre who provided the funding for the purchase and adaptation of the water container.

We made a number of adaptations aimed at preventing those intent on vandalism from damaging the tap or emptying all the rainwater in the container.



We did this because of experience gained, sadly in recent weeks, when our waterbutt at the rear of Platform 1 was all but destroyed by vandals.

We very much hope that the 1,000 litres of rain water that will eventually fill the container will be able to be used to water the gardens and planters on that side of the station.

In the past, given that there is no water supply available for us to use at the station, water has had to be brought in containers from member's homes so that the flowers and plants could be watered during dry spells.

However, the new "recycled" container is a much more environmentally friendly option as it will only contain rainwater thus saving tap water.



Our next Task Session will take place on Saturday 2nd March 2024 from 2pm.

This is a week earlier than usual given that a few of our regular attendees will be away the following week.

However, things will return to normal in April with the first Task Session of the month taking place on Saturday 13th April 2024 (from 2pm) followed by another on Tuesday 23rd April 2024. This will be an evening session commencing at 7pm.

The Tuesday evening sessions will then take place throughout the summer months, usually on the 4th Tuesday with the last one in September.

We will, of course, give full details of all upcoming Task Sessions in the monthly Newsletters.

ANNUAL GENERAL MEETING - WEDNESDAY 6TH MARCH 2024

Remember this year's Annual General Meeting is on Wednesday 6th March 2024 commencing at 7.00pm in the back room of Hop Haus (formerly known as Jake's Ale House) at 27 Compstall Road, Romiley.

There have been no additional items added to the draft Agenda that we published in the last Newsletter.

However, there will be an opportunity to raise anything you want at the meeting under Any Other Business.

Set out below is the final Agenda together with the statement of accounts for year ending 31st December 2023. The accounts have been examined by our auditor, John Simpson, and will be formally presented at the meeting. A copy of his Examiners Report will also be provided at the meeting. We will bring along printed copies of the Agenda and accounts for those attending the meeting.

AGENDA

1. Apologies for Absence
2. Minutes of the Annual General Meeting held on the 14th March 2023
3. Matters arising from the minutes
4. Officer's Reports
 - Chair
 - Secretary/Membership Secretary
 - Treasurer (including presentation of Annual accounts (kindly audited by John A Simpson BA ACA))
5. Election of Officers and Committee
 - Chair
 - Secretary
 - Membership Secretary
 - Treasurer
 - Committee Members
6. Projects for 2024
7. Any Other Business

THE FRIENDS OF ROMILEY STATION
STATEMENT OF ACCOUNTS

YEAR ENDING 31ST DECEMBER 2023
(YEAR ENDING 31ST DECEMBER 2022)

	2022	2023	2022	2023	2022	2023
Opening Balance (Virgin Money Bank Account)	£4,535.57	£3,994.16				
Opening Balance (Petty Cash)	£136.79	£50.42				
Opening Total Balance	£4,672.36	£4,044.58				
	Income		Expenditure		Surplus/Deficit	
Donations	£45.00	£268.93			£45.00	£268.93
Grant - Northern Rail	£500.00				£500.00	£0.00
Grant - Arnold Clark Community Fund	£1,000.00				£1,000.00	£0.00
Grant - TfGM	£200.00	£500.00			£200.00	£500.00
Grant - Community Rail Network	£783.00				£783.00	£0.00
Grant - Northern Rail		£509.25			£0.00	£509.25
Grant - Stockport MBC - Ward Flexibility Fund		£375.00			£0.00	£375.00
Platform 2 Storeroom			£23.71	£17.09	-£23.71	-£17.09
Christmas Decorations			£19.47		-£19.47	£0.00
Station Artwork			£480.11	£511.24	-£480.11	-£511.24
Mason Bee Tubes				£8.99	£0.00	-£8.99
Interpretive Board			£948.00		-£948.00	£0.00
Queen's Platinum Jubilee Celebrations			£38.49		-£38.49	£0.00
Walks from Romiley Station Booklet			£750.00		-£750.00	£0.00
Gardening (Plants, Seeds, Tools etc) including Planters			£785.88	£423.41	-£785.88	-£423.41
Garden Bench				£339.30	£0.00	-£339.30
Passenger Survey Tally Counters			£8.99		-£8.99	£0.00
Bird/Bat Boxes			£17.99	£61.97	-£17.99	-£61.97
Bug Hotel			£57.60		-£57.60	£0.00
Platform Poster Cabinets			£31.45	£11.99	-£31.45	-£11.99
Bank Cashback	£5.91	£3.04			£5.91	£3.04
	£2,533.91	£1,656.22	£3,161.69	£1,373.99	-£627.78	£282.23
Opening Balance at 1st January					£4,672.36	£4,044.58
Surplus/Deficit for year ending 31st December					-£627.78	£282.23
Closing Balance at 31st December					£4,044.58	£4,326.81
Made up of						
Virgin Money Bank Account					£3,994.16	£4,235.61
Petty Cash					£50.42	£91.20
Total Balance at 31st December carried forward					£4,044.58	£4,326.81

STATION CODES QUIZ

Every railway station on the national network has been allocated a 3 letter station code. For example the code for Romiley is **RML** whilst that for Bredbury is **BDY**.

They can be found on the National Rail and other railway websites.

So this month we thought that we would compile a general knowledge quiz with each answer being just 3 letters. If you get the right answer then those 3 letters will be a station code from which you must then identify the station name.

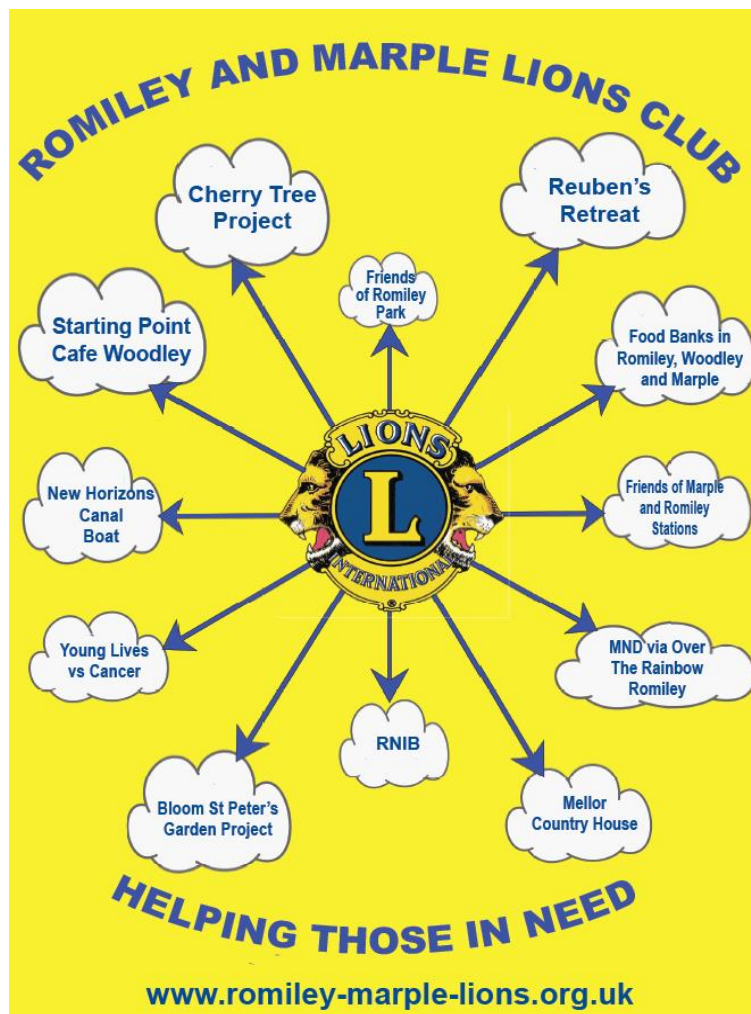
If the question was “*What name is given to a weather phenomenon that appears when water vapour condenses, primarily in humid conditions, often severely restricting vision?*.” The answer we would be looking for is **FOG** with **FOG** being the station code for **Forest Gate**.

Good luck then with the following fifteen questions. Hopefully you will find all the 3 letter answers and be able to identify the stations.

1. What informal name is given to a performance by a musician at a concert or more often one that is given in a club?
2. If you don't have a valid argument it can be said that you don't have one of what to stand on?
3. What is the perfect score in a single routine of artistic gymnastics?
4. What is the acronym for a collection of computer devices that are all connected together in on physical location, such as an office?
5. In one of Agatha Christie's novels a series of murders took place that featured a rail guide. What 3 letters were used to describe that series of murders?
6. What shortened name is given to a popular sandwich filling that contains a type of salt cured pork plus two salad ingredients?
7. What is the first name of the actor who starred in films such as Driving Miss Daisy, Ghostbusters and the Blues Brothers?
8. What unit of weight is equivalent to 2,240 pounds?
9. Which British army regiment, formed in 1941, that has the motto “who dares wins” specialises in covert operations?
10. What is the short name of the rock band founded in Birmingham in 1970 by Jeff Lynne and Roy Wood?
11. What is the number 54 when expressed in Roman numerals?

12. What is the French for good?
13. Which Father was the most well-known resident of Craggy Island?
14. What name can be given to a small child as well as a bit of whisky?
15. Which 3 letters are a shortened form of the name given to an indoor exercise venue?

ROMILEY & MARPLE LIONS CLUB



We have been working very closely with the Romiley & Marple Lions Club for a few years now.

During that time they have not only provided some financial support for the work that we do but have also made gifts of flowers and plants.

We are extremely grateful to them for their interest in what we do and for their practical help (which is just a small part of the extensive work that they do for the benefit of the wider community).

At the station they tend and maintain our Platinum Jubilee Garden together with the station planters.

Indeed the construction costs of the large wooden planters on the two platforms were funded by the Club.

They have recently updated their own publicity material and would always welcome new members and volunteers.

If any of our readers are interested do get in touch with them (the website details are on the poster above) or pop along to one of their monthly meetings held at Romiley Conservative Club (just around the corner from the station at 6 Guywood Lane, Romiley, Stockport, SK6 4AN) between 7.30pm and 8.30pm on the fourth Tuesday of any month.

CHESHIRE WILDLIFE TRUST - WILDER CHAMPIONS

We have been seeking advice and support from the Cheshire Wildlife Trust as we look to spread our wings (so to speak) by doing more to encourage wildlife at the station.



Cheshire
Wildlife Trust

We now have a number of bird boxes, including some specialist swift boxes together with bat boxes which need putting up in the right sort of places so as to fully encourage their use by the appropriate wildlife.

We are working with Northern and the Trust to get them put up in exactly where they will work best in helping potential users.

We have again this year obtained a supply of mason bee cocoons which we will put in the release box behind platform 2 in a few weeks' time.

As part of our consultation with the Trust we have signed up as one of Their Wilder Champions.

The Champions are people who are stepping forward to lead and support others to take action for nature in their local communities, schools or places of work.

So why not at railway stations throughout Cheshire (and beyond)

We will now receive the Champions newsletter and join a network of like-minded people.

The Trust also run a variety of training courses to help people develop the skills needed to continue the great work of helping wildlife.



Full details of the Trust can be found by visiting www.cheshirewildlifetrust.org.uk.

NEWSPAPER HEADLINES AND STORIES FROM DAYS GONE BY

It's been rather wet and miserable over recent weeks so what better than looking through old newspaper headlines and stories, especially those that feature the railways in days gone by.

Things were so much different when there were no mobile phones or other quick ways of communicating, such as through social media.

A totally different approach was taken to local news. An approach that today we often find strange or amusing.

Anyway, we set out below a few railway related extracts from some of our former local newspapers. As we find more we will feature them in future issues of the Newsletter.

WAR TRAINS

On Wednesday night a number of trains were run through Romiley by the War Office. One of them was a long one containing munitions of war and ammunition. Trains of coaches were also hustled through.

(Ashton-under-Lyne Reporter 8th August 1914)

GUARDING THE BRIDGES

The Marple Council have assured the people of the district that the Marple Railway Viaduct is being guarded by men in uniform and that other precautions are being taken.

(Ashton-under-Lyne Reporter 15th August 1914)

A BRIGHTER RAILWAY STATION

I have heard many appreciative comments about the efforts of Marple railwaymen to beautify their station. For some weeks rockery work and flower beds have been in the course of formation on the bottom end of the up-line. Several wagon loads of soil, excavated near Strines, have been utilised, and every member of the station staff, from Stationmaster downwards, seem to be enthusiastic for the success of the enterprise. Plants from their own gardens, or purchased with their pocket money, are already coming into bloom. It is good to know that the station garden is also stimulating public interest and many of the regular travellers on the line who appreciate a brighter station, are giving practical aid with gifts of rose trees and other plants.

(High Peak Reporter 30th April 1937)

THE MARPLE TRAIN SERVICE

Residents of Marple, Mellor, Ludworth and Compstall, etc, who have to use the trains running through, and to and from Marple, for business purposes, are asking when the present inadequate train service and accommodation for passengers are going to be improved. The lack of accommodation on the trains running is scandalous.

It is now a common occurrence for 18 persons to have to travel for miles in one compartment. The 3rd class compartments will be overcrowded from one end of the train to the other. Is that good for the public health?

Just imagine, no trains from Rose Hill in the direction of Macclesfield from 9.26am to 5.04pm, that is 7 hours and 38 minutes, nearly 8 hours, and next month the staff will be on an 8 hour day and have to be paid for overtime. They are not to blame. It is the stupid and senseless arrangements made by the railway authorities which are to blame. The war is now over, and it is getting time an approximation was made towards pre-war conditions.

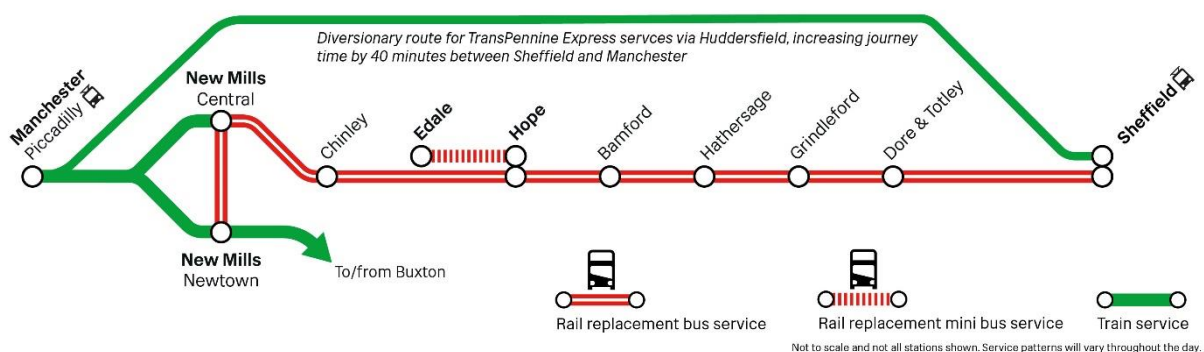
(High Peak Reporter 18th January 1919)

HOPE VALLEY - LINE CLOSURE - 16TH TO 24TH MARCH

For nine days between Saturday 16th and Sunday 24th March, the Hope Valley line will be closed whilst the railway is upgraded as part of the Hope Valley Rail Upgrade programme.

The work will also affect Sheffield station, with a much smaller number of platforms being available for use. This means some long distance trains will be diverted, coupled with the use of rail replacement buses.

Buses will replace Northern trains between New Mills Central and Sheffield with TransPenine Express trains being diverted via Huddersfield. A summary is set out in the following diagram. If you are intending to travel during the closure then do check your intended journey in advance at www.northernrailway.co.uk.



STATION CODES QUIZ – THE ANSWERS

- | | | |
|-----|---------------------------------|-----------------------|
| 1. | GIG | Giggleswick |
| 2. | LEG | Lea Green |
| 3. | TEN | Tenby |
| 4. | LAN | Lancaster |
| 5. | ABC (The ABC Murders) | Altnabreac |
| 6. | BLT (Bacon, Lettuce and Tomato) | Blantyre |
| 7. | DAN (Ackroyd) | Darnell |
| 8. | TON | Tonbridge |
| 9. | SAS | St Annes on the Sea |
| 10. | ELO (Electric Light Orchestra) | Elton & Orston |
| 11. | LIV | Liverpool Lime Street |
| 12. | BON | Bolton |
| 13. | TED (Father Ted) | Teddington |
| 14. | TOT | Totnes |
| 15. | GYM (Gymnasium) | Great Yarmouth |

Published by

The Friends of Romiley Station