

Friends of Romiley Station

FORS

NEWSLETTER

MAY 2026

Welcome to the May edition of our monthly Newsletter. It's fantastic now that spring is in full swing with lots of colour at the station.

Over the past week or so the weather has been really good making our work even more pleasurable.

We have already held our first evening Task Session and more will follow during the summer months.

As you can see below this month we are featured in the Cheshire Life magazine, indeed we were also in the April edition.

CESHIRE LIFE MAGAZINE



In the April issue of the magazine there was a comprehensive report on the Cheshire Best Kept Stations Awards Evening at Crewe in early February, where it would not have escaped your notice that we were delighted to be honoured with the Best Kept Station Award for 2025.

Following on from that you very much need to pop into your local newsagents to buy a copy of the latest edition of Cheshire Life

as it dedicates no less than 5 pages to the village, our station and the people who have made, and continue to make, so many positive things happen in Romiley.



It's a really good article supported by lots of pictures.

TASK SESSIONS

From the introduction to this month's newsletter you will already know that we have now started our evening task sessions for this spring and summer.

The next one will be on Tuesday 26th May from 7pm until 9pm. Before that we have a Saturday afternoon session commencing at 2pm on 9th May.



Please do try and come along if you are able to do so.

The effort put in at previous sessions is clear to see from the two

photographs that we have included this month.

The tulips are stunning all around the station.

Progress has been made in clearing the area by the platform two station building and providing some flowers for our mason bees to get stuck into. .



DID YOU KNOW

DID YOU KNOW?

That according to official figures for 2024/25 some 287,016 people travelled by train to or from Romiley station

That is not far short of 800 each day

Friends of Romiley Station
FORS

Over the past month or so we have been busy getting together some 24 facts about Romiley and the station which we have now set out on "Did You Know" cards.

DID YOU KNOW?

That Romiley Board Mill founded in 1833 on its present site by the Peak Forest Canal recycles some 60,000 tonnes of paper and card each year

Friends of Romiley Station
FORS

These are all available to observe at the station but to whet your appetite here are just some of them. Do pop along to see them if you possibly can.

DID YOU KNOW?

That the what3words location of the main entrance to Romiley Station is slams.spits.social

Friends of Romiley Station
FORS

However, if you are unable to get to the station and you would like to see all 24 then please do email us at fors@btinternet.com and we will let you have a PDF file that contains them all,

DID YOU KNOW?

That double Booker Prize winning author Dame Hilary Mantel lived in Romiley during the 1960s

She was a pupil at Harrytown School

Friends of Romiley Station
FORS

DID YOU KNOW?

That Sir Ian McKellen, famous for portraying Gandalf in "The Lord of the Rings" and "The Hobbit" was baptised in Hatherlow United Reformed Church, Romiley in 1939

Friends of Romiley Station
FORS

DID YOU KNOW?

That the Peak Forest canal passes through Romiley having been built at the start of the 19th century

However, it wasn't until 1862 that the railway first arrived

Friends of Romiley Station
FORS

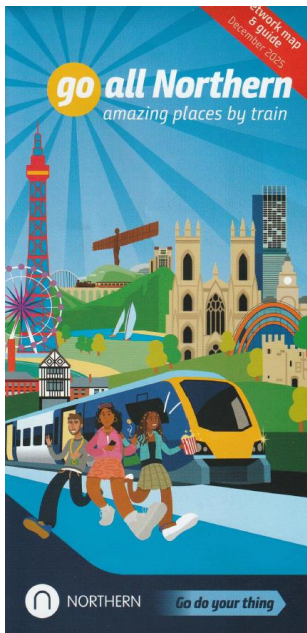
DID YOU KNOW?

That Romiley Station lies within the Romiley Church Lane Conservation Area

That is one of four such areas in the village

Friends of Romiley Station
FORS

“GO ALL NORTHERN – AMAZING PLACES BY TRAIN” ALPHABETICAL QUIZ



This month we are being somewhat fiendish with our quiz which is based entirely upon a superb leaflet published by Northern entitled “*go all Northern – amazing places by train*” that not only features a very clear route map of Northern services but also provides details of some fantastic places to visit on their network.

Those places are each given a brief description within the leaflet and what we have done is to select twelve destinations and then simply extract part of the narrative which most clearly describes where to visit. At the end of that we have then set out the actual name of the recommended town or city.

The catch is that we have put every word and place name into

alphabetical order leaving you to solve a whole host of anagrams. There are different ways that you can approach the quiz. You can solve the location anagram first which should then help you with the descriptive extract. Alternatively you could do things the other way round.

There again, you could make the quiz a whole lot easier by picking up one of the leaflets from any local station to help you or simply use the extracts pictured here and below.

However, whatever you choose make sure that at some stage you get one of the leaflets in order to plan your next adventure on Northern services.

Whatever you decide to do we very much hope that you enjoy this month’s challenge.

Below is an example of what you will face.

Q “opp inot eht ginnnstu 1930s addilMn eHlot” – abceeMmor

A “pop into the stunning 1930s Midland Hotel” – Morecambe

Good luck

Destination 1

“a abchnr fo famosu Bestty aCéf adn aeT moorR” – elkly

Destination 2

“cDeiorsv het acefgiimnnt ceeiP aHll” – aafHilx



Destination 3

“ehT deeGior aacilpt” – aceINstw

Destination 4

“aginors cGhiot eimnrst cchru” – Beelrvy

Destination 5

“accht eht AD122 bsu” – aeHhmx

Destination 6

“Hop no aemprStu” – deeffhilS

Destination 7

“A city fo celrtuu” – aBddforr

Destination 8

“afmosu for eht aBeelst” – eiLlooprv

Destination 9

“in eht aeht fo eht aekP cDiirstt” – Bnotux

Destination 10

“cdeehPr no cffils abeov eht eiRrv ddiN” – abeghKnoorsu

Destination 11

“adest abck ot amnoR eimst” – Ceehrst

Destination 12

“afmosu fhis adn chips” – bhitWy

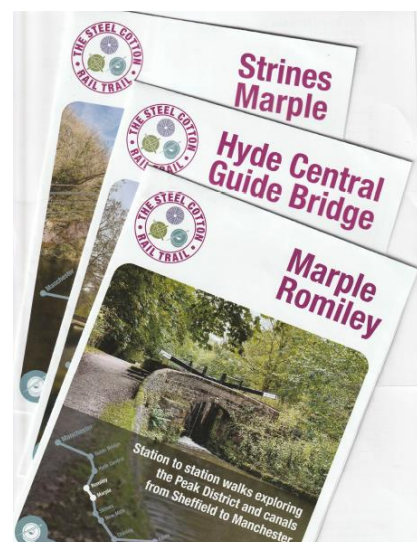


THE STEEL-COTTON TRAIL

Last month we made mention of two open meetings that were being held in Edale during April.

Feedback from the organisers indicate that they were very successful and productive and things will be very much moved forward with a music project based on the Steel Cotton Rail Trail.

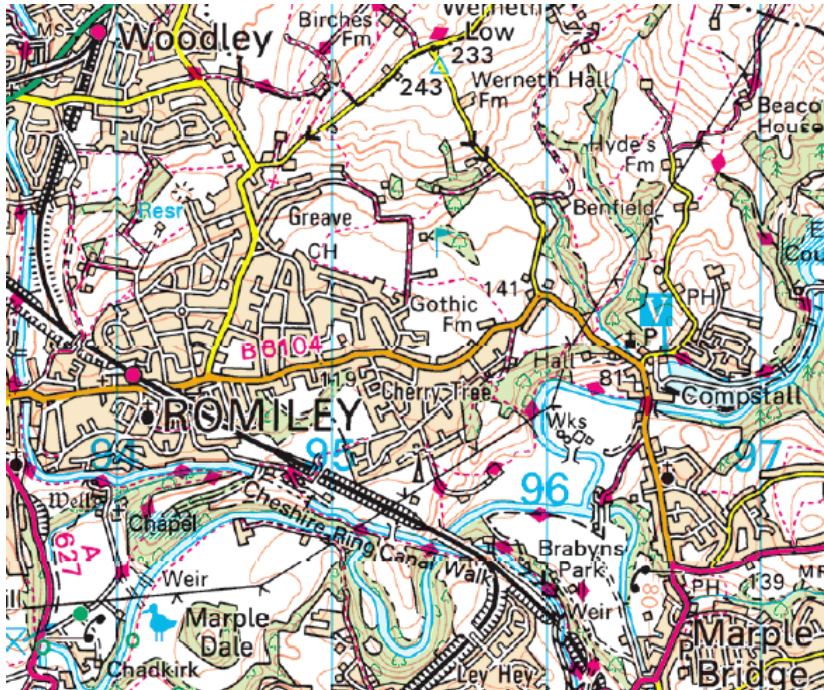
Meanwhile we are pleased to report that a stock of the printed Steel Cotton Trail leaflets, feature the walks in our area, have now been obtained and they are available from the ticket office.



FORs ANNUAL WALK – 4TH JULY 2026

Mike Hanson has now planned our annual walk, which as mentioned last month will take place during the afternoon of Saturday 4th July.

After exploring Marple, Strines and New Mills in previous years, this year we'll be staying on home turf and exploring the boundaries of Romiley.



The walk will take in two conservation areas, the Peak Forest canal, Chadkirk Chapel, the edge of Romiley golf course, Greave and Heald Wood before finishing with a well-earned drink in the Platform One pub next to the station.

We very much hope that our friends from neighbouring station adoption groups will be able to join us.

The walk itself is around 5 miles long and depending on pace, is likely to last around 2½ to 3 hours. It includes one strenuous ascent up to the canal but is otherwise quite moderate in nature.

Walking boots are, however, recommended and you may find walking poles useful too.

We will be meeting on Stockport Road outside the main entrance to Romiley station, for a 2.15pm start. If anyone is joining us from Hyde, we'll wait for the 14.17 arrival.

Please contact Mike Hanson on mike.hanson@zen.co.uk or 07941-389990 to let him know if you are coming

FRIENDS OF ROMILEY STATION – T-SHIRTS, POLO SHIRTS & SWEATSHIRTS



Working with workwear providers, Warrens from Chadkirk Industrial Estate, who have done the artwork shown on the left we can now obtain ForS polo shirts, T-shirts and sweatshirts for anyone who would like to place an order.



The cost, including VAT, is £17.52, £14.88 and £19.20 respectively. If you want to place an order then please get in touch at fors@btinternet.com and we can let you have a sizing chart for you selected garment(s). We have gone for the colour turquoise.

ROMILEY – FOOD ON FRIDAY – 15TH MAY

The very popular “*Romiley Food on Friday*” returns to the Precinct on 15th May.

It is not just an evening of food as there is also live entertainment plus the chance to have the odd drink.



Food on Friday is brought to the village by the very active Romiley Traders Association who in addition organise the monthly Market which is held on the first Saturday of the month.



That means that the market will be held this coming Saturday, 2nd May.

The stalls are open from 9.30am until 3pm.

The market also features live music to compliment the numerous artisan, food and gift stalls.

BUXTON SPA EXPRESS – STEAM HAULED TRAIN – SATURDAY 16TH MAY

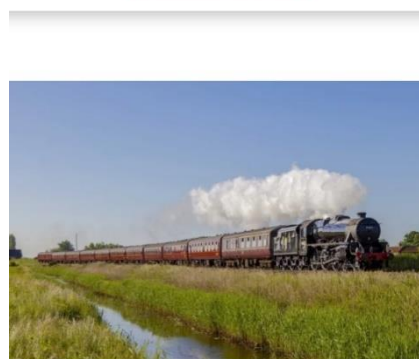
The Railway Touring Company are once again running the “*Buxton Spa Express*”, a steam locomotive hauled excursion from London to Buxton via the Hope Valley line.

The next trip takes place on Saturday 16th May.

On the journey to Buxton it leaves the Hope Valley line just south of Chinley to go via the freight line and Peak Forest arriving in Buxton at 13.41.

However, on its return it leaves Buxton at 15.20 and travels via Stockport and Denton (for a water stop between 16.25 and 16.49) before passing through Romiley at approximately 17.01 before heading back up the Hope Valley.

Another steam hauled excursion “*The Coast to Coast Express*” is scheduled to take on water at Woodley before passing through Romiley on Saturday 6th June on its way from Liverpool to Scarborough. The timings for this train have not yet been published.



The Buxton Spa Express

Saturday 16 May 2026

AROUND BRITAIN RAILWAY QUIZ – THE ANSWERS

Destination 1

“a branch of famous Bettys Café and Tea Room” – Ilkley

“a abchnr fo famosu Bestty aCéf adn aeT moorR” – elkly

Destination 2

“Discover the magnificent Piece Hall” – Halifax

“cDeiorsv het acefgiimnnt ceeiP aHll” – aafHilx

Destination 3

“The Geordie capital” – Newcastle

“ehT deeGior aacilpt” – aceINstw

Destination 4

“soaring Gothic minster church” – Beverley

“aginors cGhiot eimnrst cchru” – Beeelrvy

Destination 5

“catch the AD122 bus” – Hexham

“accht eht AD122 bsu” – aeHhmX

Destination 6

“Hop on Supertram” – Sheffield

“Hop no aemprrStu” – deeffhilS

Destination 7

“A city of culture” – Bradford

“A city fo celrtuu” – aBddforr

Destination 8

“famous for the Beatles” – Liverpool

“afmosu for eht aBeelst” – eiLlooprv

Destination 9

“in the heart of the Peak District” – Buxton

“in eht aeht fo eht aekP cDiirstt” – Bnotux

Destination 10

“Perched on cliffs above the River Nidd” – Knaresborough

“cdeehPr no cffils abeov eht eiRrv ddiN” – abeghKnoorrsu

Destination 11

“dates back to Roman times” – Chester

“adest abck ot amnoR eimst” – Ceehrst

Destination 12

“famous fish and chips” – Whitby

“afmosu fhis adn chips” – bhitWy



Published by

The Friends of Romiley Station